

TITAN

RUGGED VANDAL RESISTANT
PRISONS · DETENTION CENTERS · SUBWAYS · TUNNELS

LED
IP65

MARINE GRADE HIGH PRESSURE
DIE-CAST ALUMINUM BODY

UV STABILIZED ULTRA
HIGH IMPACT RESISTANT LENS

MARINE GRADE STAINLESS STEEL
VANDAL RESISTANT SCREWS

ADA COMPLIANT



SPECIALIZED
SLS LIGHTING SOLUTIONS

SLSNW.COM | 503.530.8908
SALES@SLSNW.COM

APPLICATION

Ceiling or Wall Mount
Prisons
Railways
Subways
Tunnels
Mines

Advantages

ADA Compliant
Vandal Proof
Corrosion Resistant high pressure die cast aluminum body
One piece injection molded clear polycarbonate diffuser
Ingress Protection — IP65 Gear tray with suspension hanger

Fixture Body

The body is manufactured from rigid high pressure die-cast marine grade aluminum (EN 1706 AC-44300).

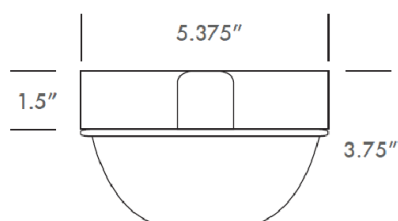
It is specifically designed for surface mounted applications.

NOTE: The body is designed and manufactured to prevent contraband being concealed behind the luminaire. The superior qualities of die-cast aluminum

makes the body able to withstand extreme abuse.

Fixture can be ordered with rear or side mounted 1/2" thread conduit entries.

Dimensions



APPLICATION

Vandal resistance, single piece injection molded UV stabilized clear polycarbonate.
Secure to the body by six marine grade 316 stainless steel allen head socket screws.
Tamper proof screws with center pin are available upon

Gear- tray

The removable steel gear trays is powder coated white to optimize luminaire efficiency.

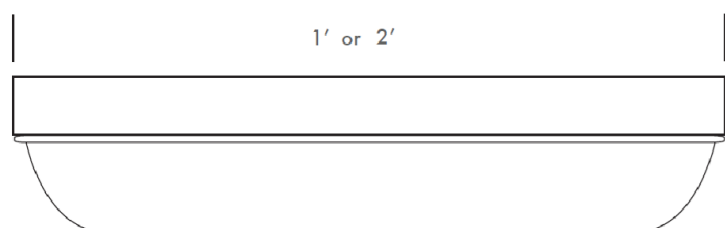
All control gear components are mounted on the gear tray.

The gear tray can be removed by loosening four 316 stainless steel screws in keyhole slots, which allows the gear tray to be suspended, providing easy maintenance.

Models

1'
TITAN-1-12W (1 foot) - 1496 lumens @ 3500K

2'
TITAN-2-24W (2 foot)



Titan Vandal Resistant

Marine Grade - High Pressure Die-Cast Body

Designed for use in correctional facilities, prisons, detention centers, subways and wet environments.

The luminaire consists of a high-pressure die-cast marine grade aluminum body with a robust polycarbonate diffuser and is designed to operate LEDs of up to 24W.

It is specifically designed for surface mounted applications.

The body and diffuser are designed in such a way to prevent collection of dust on the accessible surface of the body. This design also prevents any grip onto the luminaire. The luminaire is designed to allow entry of surface conduits via 1/2" conduit threaded entries at both ends, as well as a 1/2" hole in the center of the back of the body. A silicone gasket ensures reliable IP 65 rating.

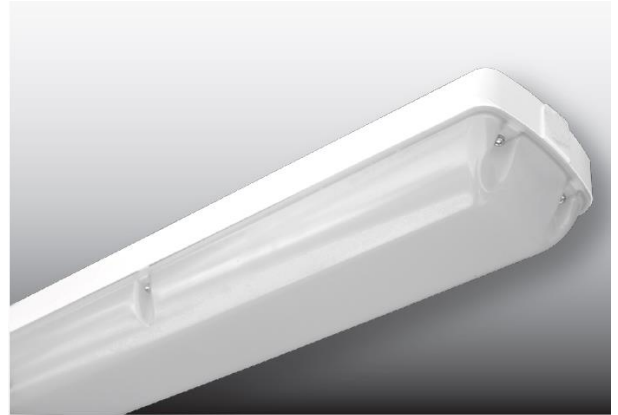
The one-piece, injection-molded high-impact polycarbonate diffuser is vandal resistant. It is secured to the body by six stainless steel Allen head screws. Tamper-proof screws with center-pin are available upon request.

The removable gear tray is white powder coated white to optimize luminaire efficiency. All control gear components are mounted on the gear tray. The gear tray can be removed by loosening four Allen head screws in keyhole slots, which allow the gear tray to be relieved into a suspended position, ensuring ease of maintenance.

All control gear components are removable and bear the relevant UL marks. All screws, bolts and metal parts are stainless steel.

This product has been specifically designed for installation in areas where vandalism takes place as well as correctional institutions.

The product is designed to fit flush with the ceiling making sure there are no gaps behind the fixture that could provide storage space for contraband or allow vandals to force the fixture off the ceiling



Technical Data

Body	Marine Grade LM6 High Pressure Die Cast Aluminum
Reflector	High Reflective White Powder Coated Steel
Hardware	Marine Grade 316 Stainless Steel
Lens	Opal UV Stabilized Impact Resistant Vandal Resistant Polycarbonate
Driver	120-277V 50-60Hz
Gaskets	Injection Molded Ultra High Temperature Silicone
LED Color	CRI >82
LED Wattage	12W, 24W
CRI	> 82
Approvals	ETL

STANDARD OPTIONS

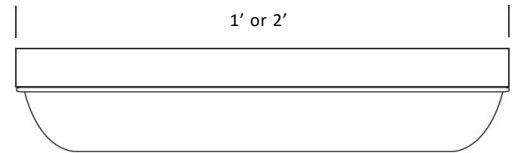
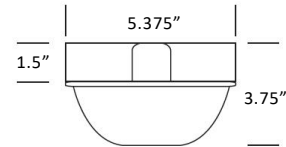
Length	LED Watts	Lumens
1 foot	12W	1496
2 foot	24W	3060

Cable Entry
1T 1/2" Tap - 1 End
2T 1/2" Tap - 2 Ends
CT 1/2" Tap - Center

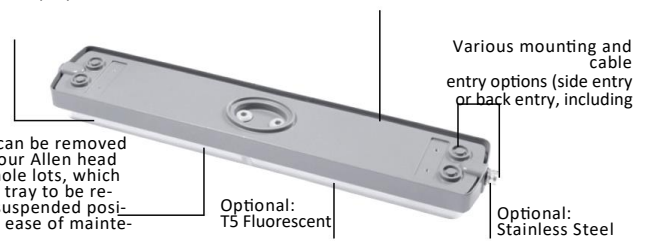
Finish	Color
W	White
G	Grey
B	Black
S	Silver

LED Color
30K 3000K
35K 3500K
40K 4000K

Extra Options
TXCP Vandal Resistant Torx Head with Center Pin
EMG Integral Emergency Battery Pack (Consult Factory)



Vandal-resistant one-piece, injection-molded polycarbonate diffuser High-pressure die-cast marine grade aluminum body



The gear tray can be removed by loosening four Allen head screws in keyhole slots, which allow the gear tray to be relieved into a suspended position, ensuring ease of maintenance

Ordering Example : Titan - 1 - 12W - 40K - G - 1T - TXCP - EMG

Contact factory for custom color

Length LED Watts LED Color Finish Cable Entry ----- Extra Options -----

Titan - _____

PROJECT: _____

DATE: _____

QUANTITY: _____

TYPE: _____

NOTE: _____

