

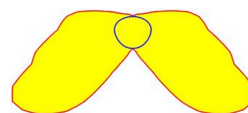
## 3F Linda Transparent LED *Wide*

6" wide polycarbonate vapor tight

**LINDA TRANSPARENT:** Specifically for parking garages or environment with low ceilings looking for a wide spread of uniform illumination of diffused light. Over 30% output is the 60°-80° zone.

### MECHANICAL CHARACTERISTICS:

- **Transparent** housing in self-extinguishing injection molded UV stabilized Polycarbonate.
- **Diffuser:** Photo-embossed to diffuse LED spots
- **Gasket:** Molded one piece injected long life sealing foam gasket provides.
- **IP65:** Watertight seal.
- **Diffuser: Frosted Transparent** Self-extinguishing injection molded polycarbonate, UV stabilized, with smooth external surface and differentiated shot-blast prismatic internal surface.
- **Gear-tray reflector unit:** reduced width for a greater indirect distribution, in hot galvanized steel, painted in white polyester, fixed to the housing by means of snap-lock devices in steel. Hinged opening for simple maintenance and installation.
- **Snug fit snap-lock clips**, in stainless steel or polycarbonate (standard), for diffuser's mounting, vandal-resistant opening.
- **Reflector:** Aluminum Miro 95% reflectance



WET LOCATION



### Technical Data

Diffuser	Clear Polycarbonate
Body	Clear Polycarbonate
Ceiling Clips	Stainless Steel
Diffuser Clips	Stainless Steel
Length (approx.)	50" & 62"
Driver	120-277V 50-60Hz (0-10V dimming control)
LED Watts	24W, 30W
LED rows per fixture	2 (6" wide)
LED Color	3000K, 4000K
CRI	> 80
Life Rating (50,000 hrs)	L85/B10
Warranty	5 years

### Installation:

**Linda** offers **quick** and **safe** installation with various types of fixings. The Luminaries are supplied with two types of mounting devices, included: Ceiling & Suspended

#### Ceiling:

Provided with Pair of metal brackets supplied for quick installation.

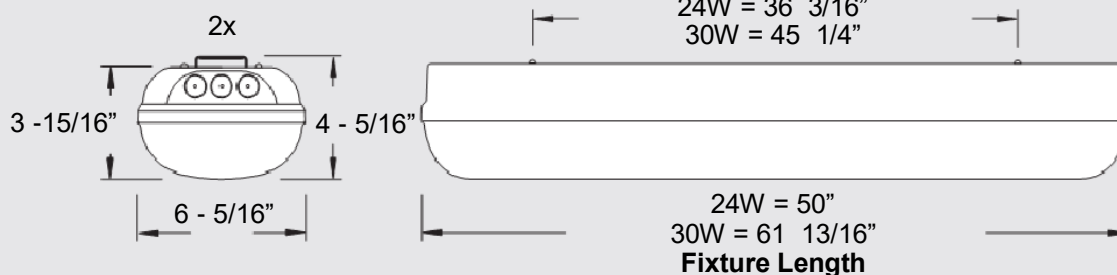


#### Suspended:

Hook or chain mounting. Provided with a Pair of steel springs supplied for quick install



### Dimensions



### ORDERING DETAILS: (DESCRIPTION)

3F LINDA TRANSPARENT 2x24 LED WIDE  
3F LINDA TRANSPARENT 2x30 LED WIDE

### ORDERING NUMBER

SLS-LTR-2x24-LED-WIDE  
SLS-LTR-2x30-LED-WIDE

### NOMINAL LENGTH

4'  
5'

### OUTPUT LUMENS

7383  
9511

### SYSTEM WATTS

59  
75

### OPTIONS

EBP-Emergency Battery Pack (Consult Factory)  
xxK-LED Kelvin  
xSOy - SO cord, x= length feet.  
Y = Black, White

## 3F Linda Transparent LED Wide

### Linda Transparent 2x24W LED WIDE

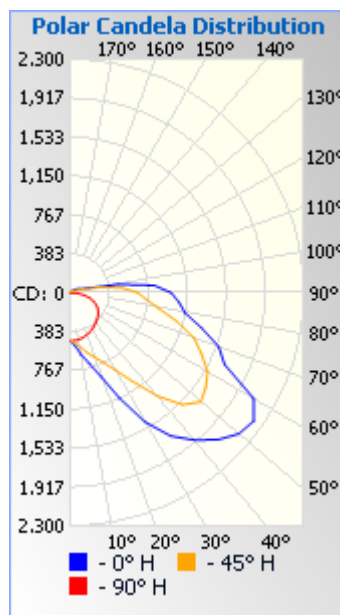
Luminaire IES File Name

2x24W 58659 - 3F Linda LED 2x24W AMPIO L1270 - 5001971

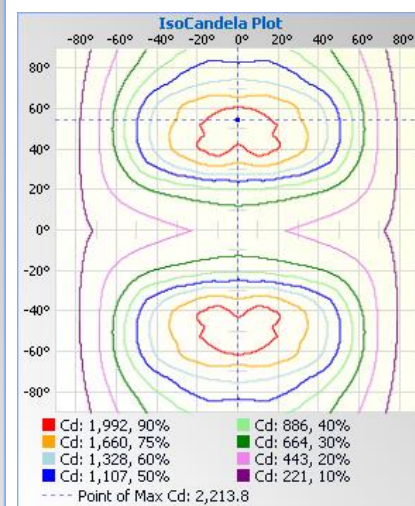
#### Lumens Per Zone

##### 3F Linda LED Transparent 2x24W WIDE L1270 - 5001971

Zone	Lumens	% Total	Zone	Lumens	% Total
00-10	49.4	0.70%	090-100	504.3	6.80%
10-20	173.7	2.40%	100-110	158.1	2.10%
20-30	370.1	5.00%	110-120	52.8	0.70%
30-40	710.9	9.60%	120-130	25.2	0.30%
40-50	1067.0	14.50%	130-140	11.2	0.20%
50-60	1264.3	17.10%	140-150	8.0	0.10%
60-70	1230.7	16.70%	150-160	4.0	0.10%
70-80	994.5	13.50%	160-170	1.3	0.00%
80-90	757.7	10.30%	170-180	0.0	0.00%



3F Linda Transparent LED 2x24W WIDE  
L1270 - 5001971



### Linda Transparent 2x30W LED WIDE

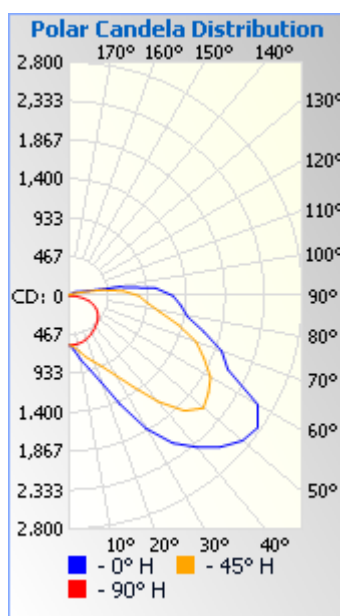
Luminaire IES File Name

2x30W 58661 - 3F Linda LED 2x30W AMPIO L1570 - 5001971

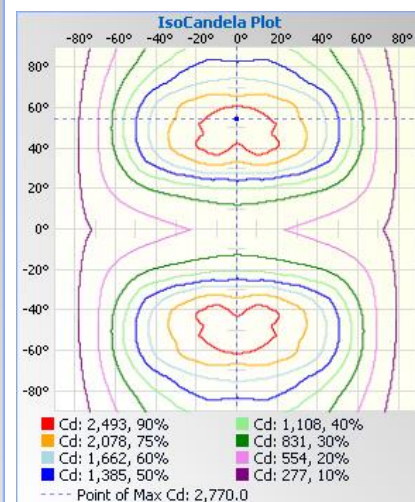
#### Lumens Per Zone

##### 3F Linda LED Transparent 2x30W WIDE L1570 - 5001971

Zone	Lumens	% Total	Zone	Lumens	% Total
00-10	61.8	0.7%	090-100	631.0	6.8%
10-20	217.3	2.4%	100-110	197.8	2.1%
20-30	463.1	5.0%	110-120	66.0	0.7%
30-40	889.5	9.6%	120-130	31.5	0.3%
40-50	1335.1	14.5%	130-140	14.1	0.2%
50-60	1582.0	17.1%	140-150	10.0	0.1%
60-70	1539.9	16.7%	150-160	5.0	0.1%
70-80	1244.3	13.5%	160-170	1.7	0.0%
80-90	948.1	10.3%	170-180	0.0	0.0%



3F Linda Transparent LED 2x30W  
WIDE L1570 - 5001971



**LINDA WIDE:** Sum of zone 60%-80% totals 30.2% which passes DLC requirement of 30% total to be classified for a **Parking Garage** fixture.

Less than 30% total of zone 60%-80% means it is a General Purpose Lighting Fixture.

## 3F Linda Transparent LED *Wide*

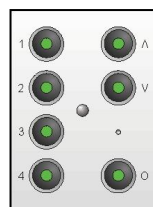


SLS-LTR-2X??

Transparent body Linda 6" wide 2 lamp cross section



LED Watts	Total Watts	Constant Current	Voltage (V dc)	LED Lumens	Luminaire Length	Width	LEDs
2x24W	59	1400mA	36	7383	50"	6"	2
2x30W	75	1400mA	45	9238	62"	6"	2

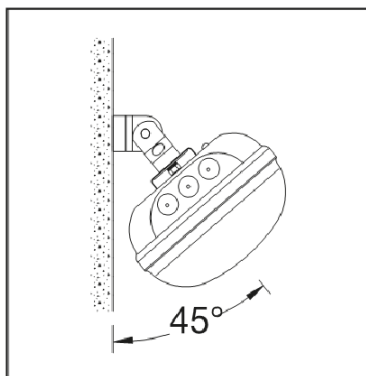


	Driver Control Interface	Input Voltage
-	Standard Switched	120/277V
StepDim	0% - 50% - 100% with two hot's	120/277V
0/10V	Philips Xitanium Mark 7 0-10V Dimming	120/277V
Powerline 277V	Philips Xitanium Mark 10 Powerline Dimming	277V
Powerline 120V	Philips Xitanium Mark 10 Powerline Dimming	120V
DALI	DALI Dimming (consult manufacturer for availability)	120/277V



EBP	Bodine BSL722 or equivalent	Others available on request
ACxx	Aircraft Cable with quick adjustment.	xx=Length Feet
xxK	Lamps installed	xx=Kelvin e.g 40 = 4000K
xSOy	SO Cord	x= length feet

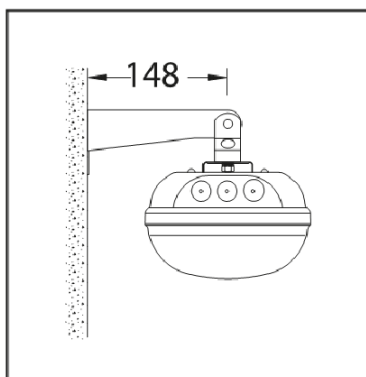
## 3F Linda Transparent LED *Wide*



### 15 GZI Wall Mounting Angle Brackets

Pair of brackets and hooks in stainless steel, with screws and bolts for fixing to the Linda, for wall or ceiling mounting, single- and twin-lamp luminaires.

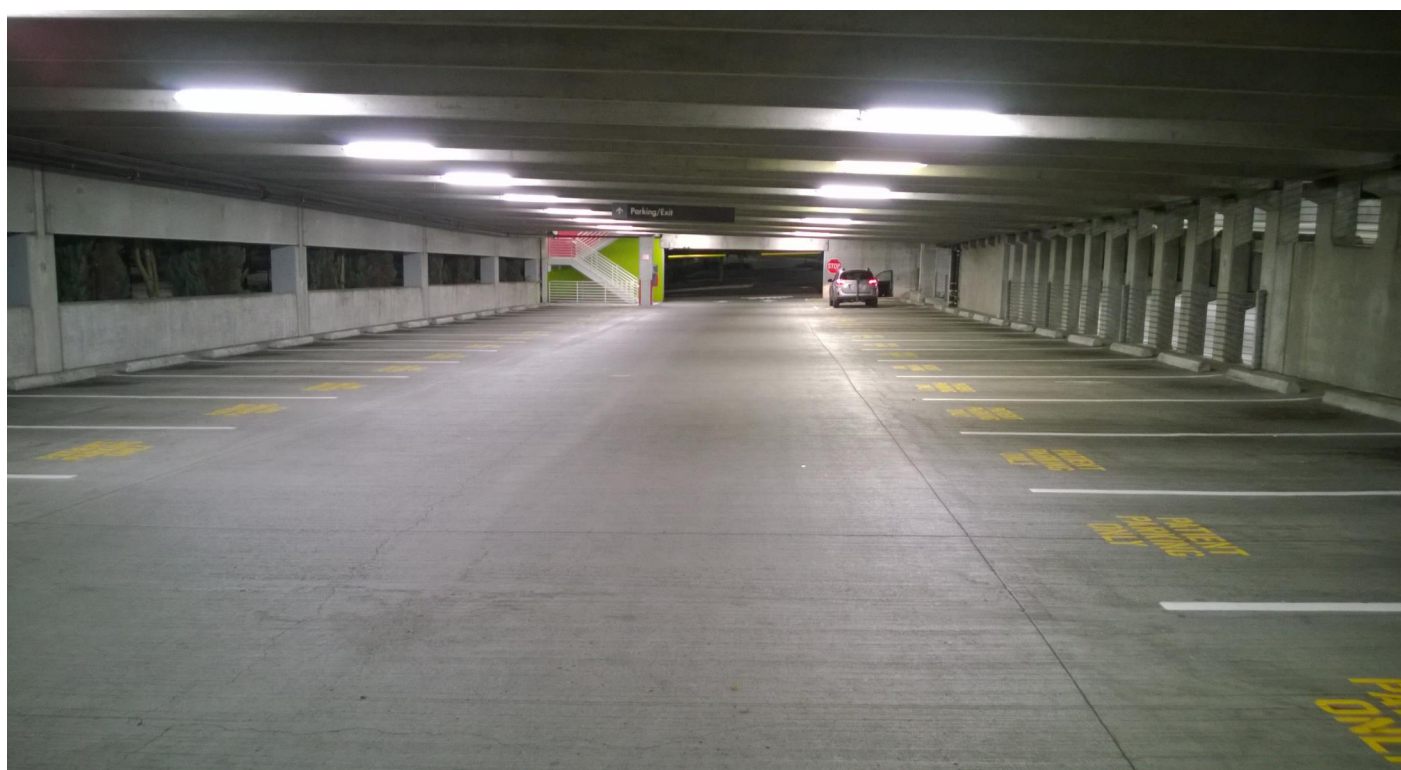
Minimum angle of inclination = 45°



### 15 MBI Wall Mounting Perpendicular Brackets

Pair of brackets and hooks in stainless steel, with screws and bolts for fixing to the Linda, for wall mounting, single- and twin-lamp luminaires.

Extension from wall 148mm or 5 13/16th inches.



<b>PROJECT:</b>	
<b>MODEL NO:</b>	
<b>DESCRIPTION:</b>	
<b>TYPE:</b>	
<b>QUANTITY:</b>	
<b>DATE:</b>	
<b>NOTES:</b>	



## ORDERING INFORMATION

<b>SLS</b>	<b>LED</b>	<b>WIDE</b>				
<b>BODY</b> LTR TRANSPARENT LIN INDUSTRIAL GRAY	<b>WATTAGE **</b> 24W 30W	<b>AIRCRAFT</b> <b>CABLE</b> ACx X=LENGTH IN FEET	<b>LED</b> <b>COLOR</b> xxK XX=KELVIN	<b>EMB</b> EMB-5W EMB-10W EMB-12W		
	<b>LAMPS</b> 2	<b>REFLECTOR</b> WIDE WIDE	<b>SO CORD</b> xSOY X=LENGTH IN FEET Y = COLOR W WHITE B BLACK	<b>DRIVER</b> <b>CONTROL</b> 0/10V (MARK 7) STEPDIM POWERLINE MARK 10 (120V) POWERLINE MARK 10 (277V) DALI ADDRESSABLE	<b>OCCUPANCY</b> <b>SENSOR</b> OS-MW OS-PIR OS-S1	

\*\*Linda Transparent (LTR)

Not available in 2x12W

\* PHILIPS XITANIUM 0/10V STANDARD DRIVER

PROJECT: \_\_\_\_\_ DATE: \_\_\_\_\_ QUANTITY: \_\_\_\_\_

TYPE: \_\_\_\_\_ NOTE: \_\_\_\_\_