



IP66 : Suitable for Wet Locations  
IK10 : Impact Resistant (Vandal Resistant)

## 3F Linda Industrial LED

4" or 6" wide polycarbonate vapor tight

**LINDA INDUSTRIAL:** As a result of its special design, with regular, streamlined shape and **patented snug fit snap-lock clips**, it is ideally suited to both home and commercial environments. The latest in technology and materials combine to allow a reduction in thickness which increases not only luminous **efficiency**, but also **elasticity**, thus ensuring improved sturdiness.

### MECHANICAL CHARACTERISTICS:

- **Body:** Grey Ral 7035 housing in self-extinguishing injection molded UV stabilized Polycarbonate.
- **Gasket:** Molded one piece injected long life sealing foam gasket provides.
- **IP66:** Watertight seal (polycarbonate clips)
- **Diffuser:** **Frosted Transparent** Self-extinguishing injection molded polycarbonate, UV stabilized, with smooth external surface and differentiated shot-blast prismatic internal surface.
- **Gear-tray reflector unit:** reduced width for a greater indirect distribution, in hot galvanized steel, painted in white polyester, fixed to the housing by means of snap-lock devices in steel. Hinged opening for simple maintenance and installation.
- **Snug fit snap-lock clips**, single action clips in stainless steel or polycarbonate (standard), for diffuser's mounting, vandal-resistant opening.



**WET LOCATION**

### Technical Data

Diffuser	Clear Polycarbonate
Body	Gray (RAL 7035) Polycarbonate
Ceiling Clips	Stainless Steel
Diffuser Clips	Gray Polycarbonate (optional Stainless Steel)
Length (approx.)	26", 50" & 62"
Driver	120-277V 50-60Hz (0-10V dimming control)
LED Watts	12W, 24W, 30W
LED rows per fixture	1 (4" wide), 2 (6" wide)
LED Color	3000K, 3500K, 4000K
CRI	> 80. CRI90 consult with factory
Life Rating (50,000 hrs)	L85/B10
Warranty	5 years

### Installation:

**Linda** offers **quick** and **safe** installation with various types of fixings. The Luminaries are supplied with two types of mounting devices, included: Ceiling & Suspended

#### Ceiling:

Provided with Pair of metal brackets supplied for quick installation

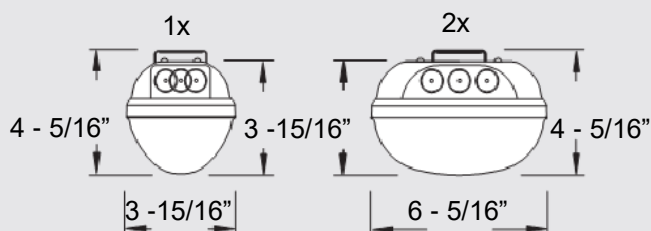


#### Suspended:

Hook or chain mounting. Provided with a pair of steel springs supplied for quick install

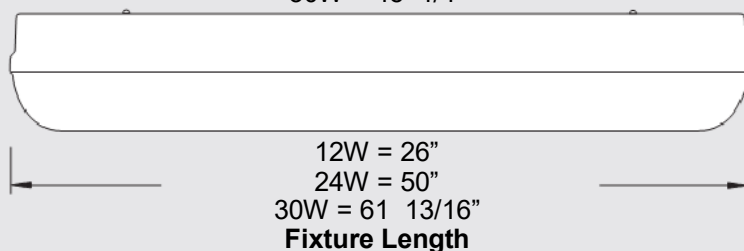


### Dimensions



#### On Centers

12W = 16 9/16"  
24W = 36 3/16"  
30W = 45 1/4"



### ORDERING DETAILS:

	ORDERING NUMBER	NOMINAL LENGTH	TOTAL LUMENS	SYSTEM WATTS	OPTIONS
3F LINDA INDUSTRIAL 1x12 LED	SLS-LIN-1x12-LED-xx	2'	1918	20	EBP-Emergency Battery Pack (Consult Factory)
3F LINDA INDUSTRIAL 2x12 LED	SLS-LIN-2x12-LED-xx	2'	3694	30	SCL-Stainless steel Clips
3F LINDA INDUSTRIAL 1x24 LED	SLS-LIN-1x24-LED-xx	4'	3802	30	xxK—Lamped with Kelvin
3F LINDA INDUSTRIAL 2x24 LED	SLS-LIN-2x24-LED-xx	4'	7399	59	xSOy - SO cord, x= length feet. Y = Black, White
3F LINDA INDUSTRIAL 1x30 LED	SLS-LIN-1x30-LED-xx	5'	4899	38	
3F LINDA INDUSTRIAL 2x30 LED	SLS-LIN-2x30-LED-xx	5'	9533	75	

## 3F Linda Industrial LED

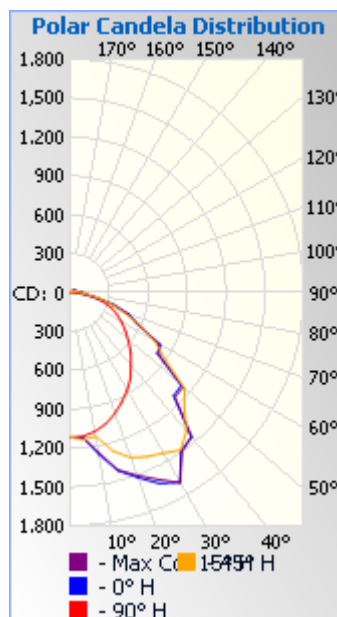
### Linda Industrial LED 1x30W-LED

Luminaire	IES File Name
1x12W	Linda_LED_1x12W_L660-5001814
1x24W	Linda_LED_1x24W_L1270-5001814
1x30W	Linda_LED_1x30W_L1570-5001814

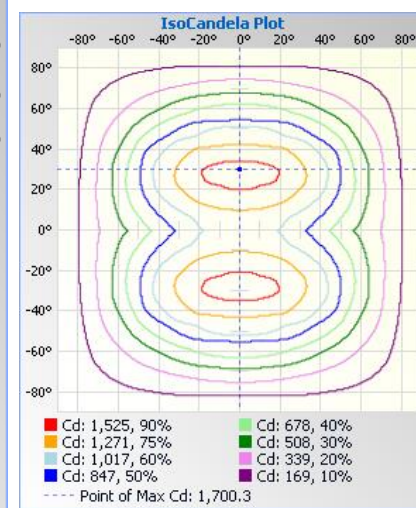
#### Lumens Per Zone

##### 3F Linda Industrial LED 1x30W L1570 - 5001814

Zone	Lumens	% Total	Zone	Lumens	% Total
00-10	109.5	2.3%	090-100	65.4	1.4%
10-20	354.9	7.5%	100-110	39.3	0.8%
20-30	621.9	13.1%	110-120	25.9	0.5%
30-40	824.8	17.3%	120-130	14.3	0.3%
40-50	866.9	18.2%	130-140	6.7	0.1%
50-60	764.4	16.1%	140-150	3.3	0.1%
60-70	572.3	12.0%	150-160	2.1	0.0%
70-80	341.6	7.2%	160-170	1.1	0.0%
80-90	143.6	3.0%	170-180	0.0	0.0%



#### 3F Linda Industrial LED 1x30W L1570 - 5001814



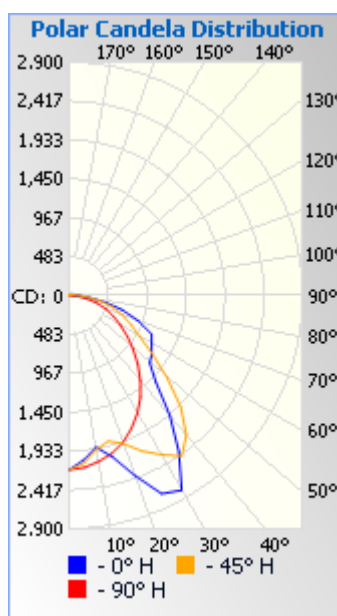
### Linda Industrial LED 2x24W-LED

Luminaire	IES File Name
2x12W	Linda_LED_2x12W_L660-5001813
2x24W	Linda_LED_2x24W_L1270-5001813
2x30W	Linda_LED_2x30W_L1570-5001813

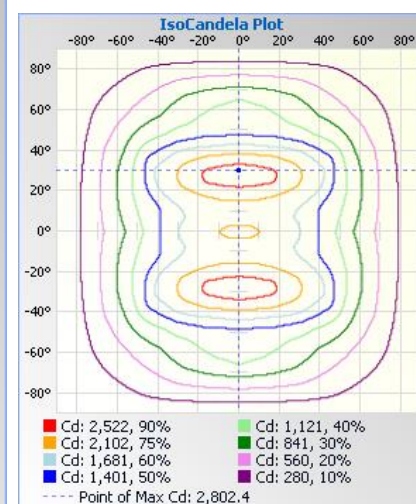
#### Lumens Per Zone

##### 3F Linda Industrial LED 2x24W L1270 - 5001813

Zone	Lumens	% Total	Zone	Lumens	% Total
00-10	196.2	2.7%	90-100	83.4	1.1%
10-20	566.5	7.7%	100-110	46.2	0.6%
20-30	1004.4	13.6%	110-120	33.0	0.4%
30-40	1317.8	17.8%	120-130	20.4	0.3%
40-50	1271.8	17.2%	130-140	10.3	0.1%
50-60	1096.7	14.8%	140-150	4.8	0.1%
60-70	896.9	12.1%	150-160	2.6	0.0%
70-80	592.1	8.0%	160-170	1.2	0.0%
80-90	254.8	3.4%	170-180	0.0	0.0%



#### 3F Linda Industrial LED 2x24W L1270 - 5001813



## 3F Linda Industrial LED

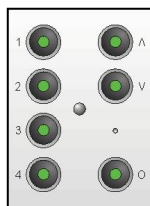


SLS-LIN-1X?? Gray body Linda 4" wide 1 lamp cross section

SLS-LIN-2X?? Gray body Linda 6" wide 2 lamp cross section



LED Watts	Total Watts	Constant Current	Voltage (V dc)	LED Lumens	Luminaire Length	Width	LEDs
1x12W	20	700mA	18	1898	26"	4"	1
2x12W	30	1400mA	18	3694	26"	6"	2
1x24W	30	700mA	36	3802	50"	4"	1
2x24W	59	1400mA	36	7339	50"	6"	2
1x30W	38	700mA	45	4758	62"	4"	1
2x30W	75	1400mA	45	9259	62"	6"	2



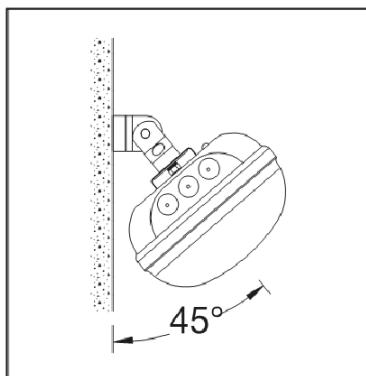
### Driver Control Interface

-	Standard Switched
StepDim	0% - 50% - 100% with two hots
0/10V	0-10V Dimming
DALI	DALI Dimming (consult manufacturer for availability)



EBP	Bodine, Iota Engineering or PowerSentry	Others available on request
ACxx	Aircraft Cable with quick adjustment.	xx=Length Feet
xxK	Lamps installed	xx=Kelvin e.g 40 = 4000K
xSOy	SO Cord	x= length feet y= <b>White, Black</b>

## 3F Linda Industrial LED

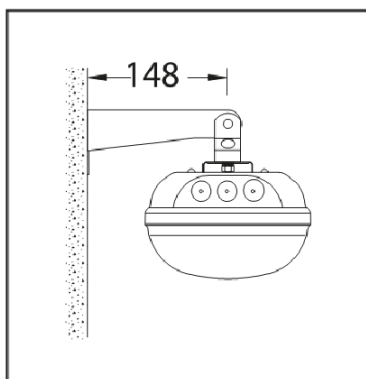


### 15 GZI Wall Mounting Angle Brackets

Pair of brackets and hooks in stainless steel, with screws and bolts for fixing to the Linda, for wall or ceiling mounting, single- and twin-lamp luminaires.

Minimum angle of inclination = 45°

(At future date, be re-numbered to 15 RIT)

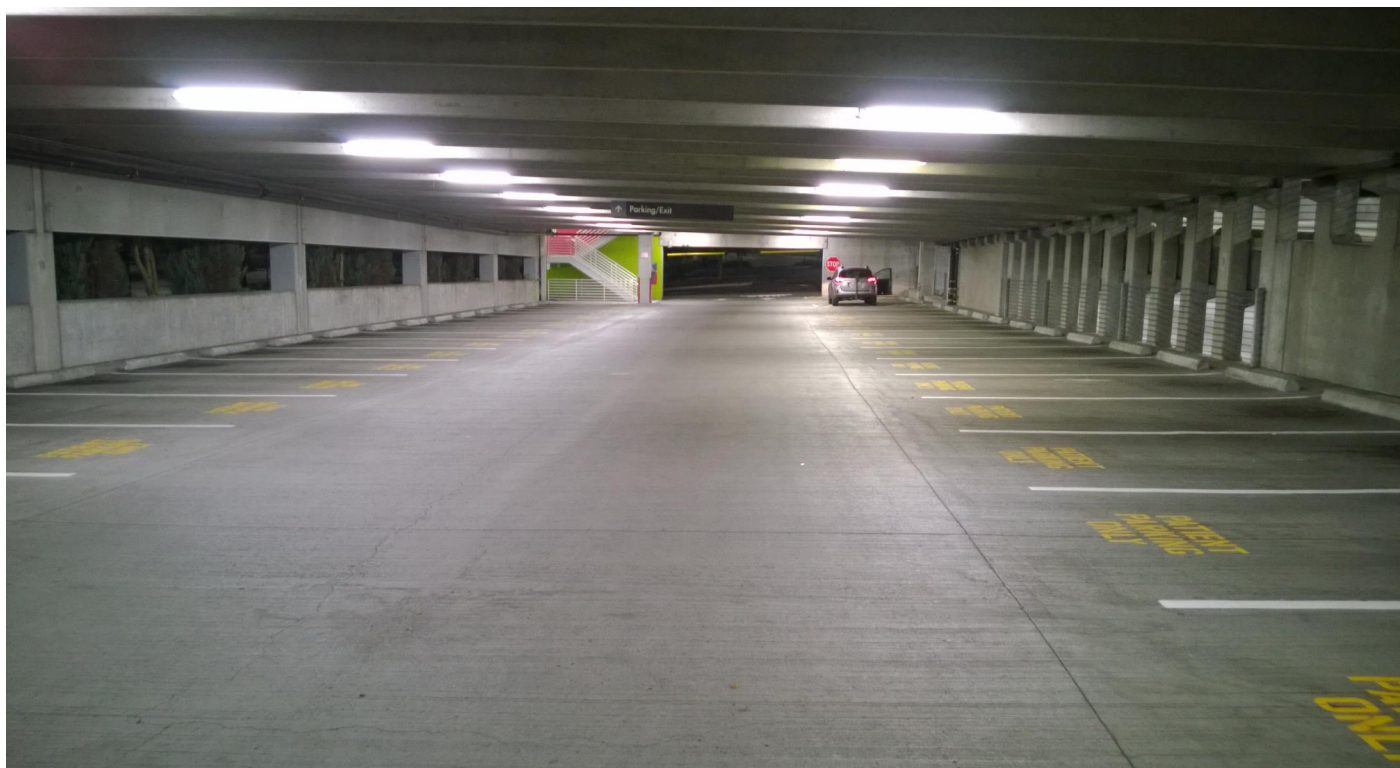


### 15 MBI Wall Mounting Perpendicular Brackets

Pair of brackets and hooks in stainless steel, with screws and bolts for fixing to the Linda, for wall mounting, single- and twin-lamp luminaires.

Extension from wall 148mm or 5 13/16th inches.

(At future date, be re-numbered to 15 FBR)





<b>PROJECT:</b>	
<b>MODEL NO:</b>	
<b>DESCRIPTION:</b>	
<b>TYPE:</b>	
<b>QUANTITY:</b>	
<b>DATE:</b>	
<b>NOTES:</b>	



## ORDERING INFORMATION

<b>SLS</b>	-	-	<b>X</b>	-	<b>LED</b>	-	-	-	-	-	-
<b>BODY</b> LTR TRANSPARENT LIN INDUSTRIAL GRAY		<b>WATTAGE</b> 12W 24W 30W		<b>AIRCRAFT CABLE</b> ACx X=LENGTH IN FEET		<b>LED COLOR</b> xxK **xx=KELVIN		<b>EMB</b> EMB-5W EMB-10W EMB-12W			
<b>LAMPS</b> 1 2		<b>CRI / CCT</b> 830 CRI 80 3000K 835 CRI 80 3500K 840 CRI 80 4000K 930 CRI 90 3000K 940 CRI 90 4000K		<b>SO CORD</b> xSOy X=LENGTH IN FEET Y = COLOR W WHITE B BLACK		<b>DRIVER</b> 0/10V (MARK 7) STEPDIM * POWERLINE MARK 10 (120V) * POWERLINE MARK 10 (277V) DALI ADDRESSABLE		<b>OCCUPANCY SENSOR</b> OS-MW OS-PIR OS-S1			

\* MARK 10 DRIVER ONLY AVAILABLE ON 2X24W MODEL  
 \*\* 3500K ON 12W & 24W MODEL

PHILIPS XITANIUM 0/10V STANDARD DRIVER

PROJECT: \_\_\_\_\_ DATE: \_\_\_\_\_ QUANTITY: \_\_\_\_\_

TYPE: \_\_\_\_\_ NOTE: \_\_\_\_\_

