

IP67 : Suitable for Wet Locations  
IK10 : Impact Resistant (Vandal Resistant)

## Santos 6- Recessed Wall Mount Marine Grade Stainless Steel 316

A range of high quality Stainless Steel 316 recessed wall mounted Luminaires with a selection of different frame options

This recessed mounted Luminaire is specially designed to deliver glare free lighting in open areas and pathways.

The combination of the linear prismatic lens creates a horizontal elliptical light output and the top eyelid hides the source of light that allows for a low glare, unobtrusive comfortable lighting effect.

Manufactured with a combination of 316L Marine Grade Stainless Steel and low copper content extruded aluminum with a marine grade powder coat finish.

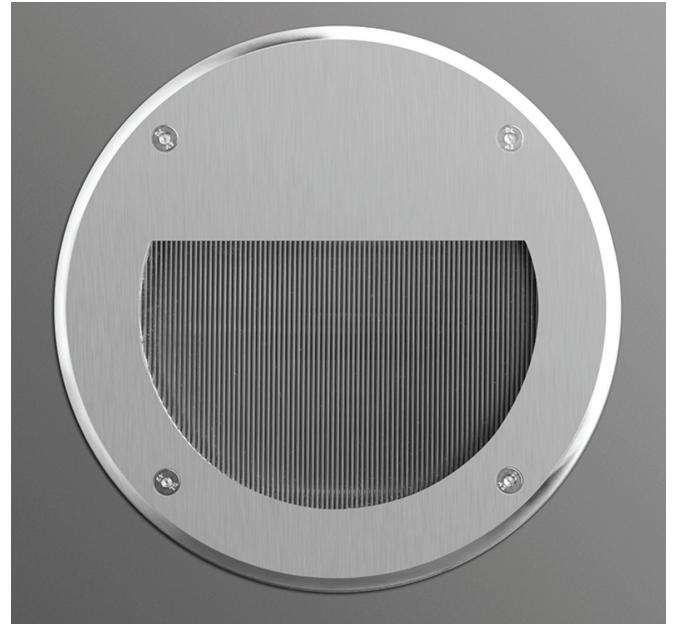
The recessing box is manufactured in a robust corrosion free Polyimide material.

Not only is the housing made of the highest quality low copper content aluminum but incorporated in the product design is a unique product feature that uses a water proof potting compound that totally seals the back of the luminaire and stops water ingress.

Installer Friendly.

A 30 Ft low voltage water proof power cable is provided from the back of the luminaire that leads to the remote mounted driver provided by SLS.

Remote mounted driver box to be provided by contractor.



### Technical Data

**Fixture Frame :** Marine Grade 316 Stainless Steel

**Body :** Extruded Aluminum with Marine Grade Paint Finish

**Recessing Box:** Corrosion Proof : Polyimide 6

**Hardware :** Marine Grade 316 Stainless Steel

**Lens :** Tempered Glass lens IK10

**Optics :** Linear Spread Lens

**Driver :** 120-277V 50-60Hz

**Gaskets :** Injection Molded Ultra High Temperature Silico

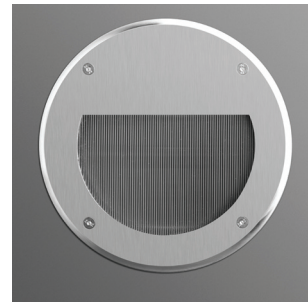
**LED :** 3000K, 4000K.

**Watts :** 12W - 819Lm

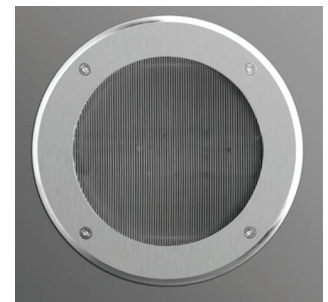
**CRI :** > 85

**Cable :** 30Ft Water Proof Cable

**Approvals :** ETL



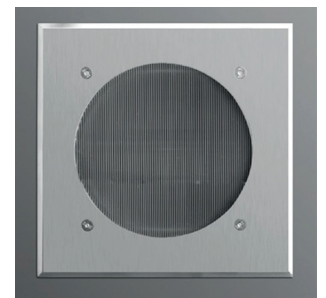
Round Eye Lid



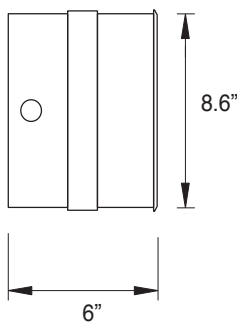
Round Open Trim



Square Eye Lid



Square Open Trim



PROJECT:

DATE:

QUANTITY:

TYPE:  NOTE:

Specialized Lighting Solutions reserves the right to change specifications without prior notice, please contact factory for latest information.

Specialized Lighting Solutions

Head Office:

7144 NW Progress Court  
Hillsboro, Oregon 97124

Tel: 503-530-8908

Fax: 503-531-0711

www.slsnw.com



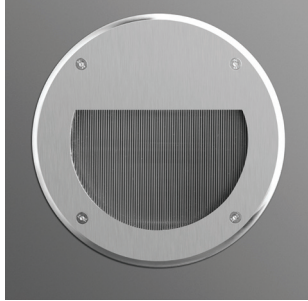
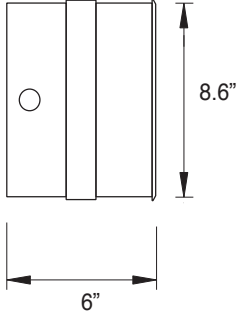


# Santos 6 Recessed Wall

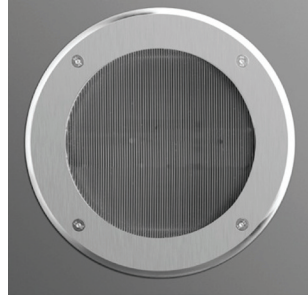
## 8.6" - Marine Grade Stainless Steel 316

### LED Watts (Specify)

☐ 12W - 819Lm - 350mA



Round Eye Lid



Round Open Trim

### LED Color (Specify)

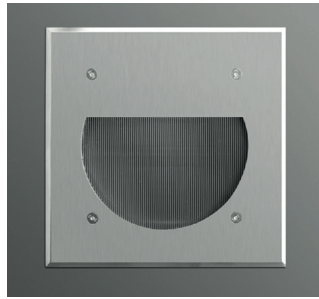
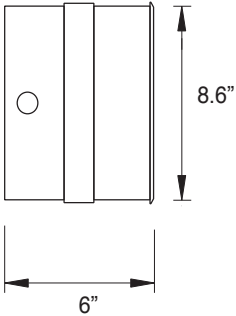
- ☐ 552121 - 3000K  
☐ 552122- 4000K

### Frame Option (Specify)

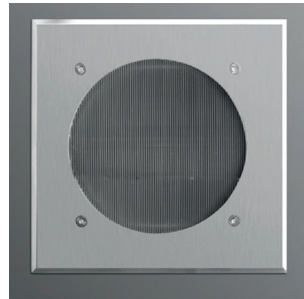
- ☐ REL - Round Eye Lid  
☐ ROT - Round Open Trim

### LED Watts (Specify)

☐ 12W - 819Lm - 350mA



Square Eye Lid



Square Open Trim

### LED Color (Specify)

- ☐ 552221 - 3000K  
☐ 552222- 4000K

### Frame Option (Specify)

- ☐ SEL - Square Eye Lid  
☐ SOT - Square Open Trim

### Options (Please Specify)

#### Lens (Please Specify)

- ☐ (C) Clear Lens  
☐ (F) Frosted Lens

#### Volts (Please Specify)

- ☐ - 120-277  
☐ - Other \_\_\_\_\_

Ordering Example : Santos 6 - 552121 - 12W - 30K - REL - C - 120-277V

	Code	LED Watts	LED Color	Frame	Lens	Volts	Other
Santos 6 -S- Recessed Wall							

PROJECT:  DATE:  QUANTITY:

TYPE:  NOTE:

Specialized Lighting Solutions reserves the right to change specifications without prior notice, please contact factory for latest information.

Specialized Lighting Solutions

Head Office:  
 7144 NW Progress Court  
 Hillsboro, Oregon 97124

Tel: 503-530-8908  
 Fax: 503-531-0711

www.slsnw.com

