



IP67 : Suitable for Wet Locations
IK10 : Impact Resistant (Vandal Resistant)

Patnos 1 - Inground LED

3 3/4" round or square
Stainless Steel 316

A range of high quality stainless inground luminaires for use in all weather conditions. This range of inground fixtures is designed to deliver the desired light effect to facades, columns, bridges monuments and trees.

The fixtures are manufactured with a combination of stainless steel 316L and powder coated low copper content aluminum. Provided with a marine grade powder coated aluminum recessing box for easy mounting in ground and concrete.

This LED fixture is available with options of a round or square trim in two different sizes (see Patnos 1 Micro). For wall wash applications consult factory.

Vandal Resistant Tempered Glass, High temperature silicone gaskets and cast resin complete the fixture and make it IP67 and IK10 to withstand harsh environments.

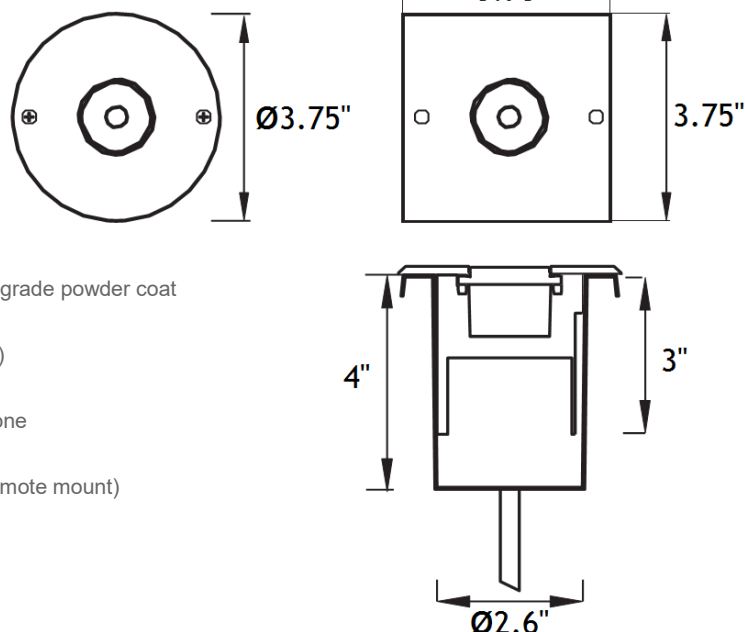
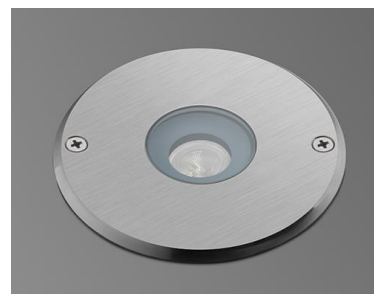
Not only is the body made of the highest quality low copper content aluminum but incorporated in the product design is a unique product feature that uses a water proof potting compound that totally seals the back of the luminaire and stops water ingress.

This product is designed for use on pathways, landscapes and open spaces. The fixture is pre-wired with a 16 Ft water proof cable that makes connection to the remote mounted controls a simple task. Longer power cable can be provided if specified.

Remote mount box to be provided by contractor

Technical Data

Inground Box	Marine Grade Aluminum
Frame	Marine Grade 316 Stainless Steel
Body	Extruded Aluminum with UV protected marine grade powder coat
Hardware	Marine Grade 316 Stainless Steel
Lens	Tempered Glass 0.31" thick (Clear or Frosted)
Remote Mount Box	Provided by others
Gaskets	Injection Molded Ultra High Temperature Silicone
Driver	120/277VAC 50-60Hz (remote mount)
Low Voltage (optional)	120VAC to 24VDC low voltage transformer (remote mount)
LED Watts	1W, 3W
Lumens	70, 150
LED (static white)	2700K, 3300K, 4500K, 6000K
LED (static color)	Red, Green, Amber or Blue
CRI	> 85
Cable	16 foot Water Proof Cable
Approvals	ETL



PROJECT: _____

DATE: _____

QUANTITY: _____

TYPE: _____

NOTE: _____

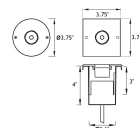
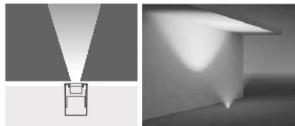


Patnos 1 - Inground LED

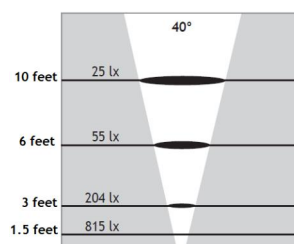
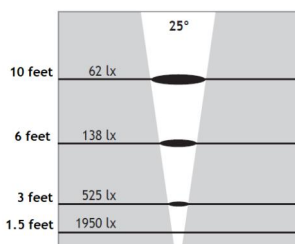
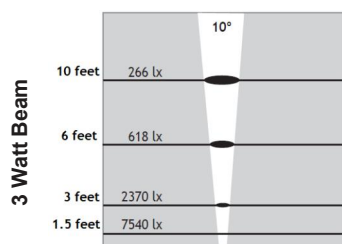
3³/₄" round or square
Marine Grade Stainless Steel Frame

3.75" Diameter

0° Tilt



Watts	Round (Specify)	Square (Specify)	Lumens
1W	160020	160030	70
3W	160060	160070	150



Options (Specify)

LED Color

(27K)	2700K
(33K)	3300K
(45K)	4500K
(60K)	6000K
(BLU)	Blue
(RED)	Red
(AMB)	Amber
(GRN)	Green

Tilt

(0)	0°
(7)	7°

Beam Spread

(10) *	10°
(25)	25°
(40)	40°

Lens

(C)	Clear
(F)	Frosted

Volts

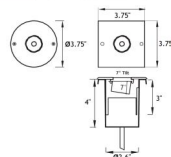
(UNV) remote	120/277V AC
(DC) remote	24V DC

- 7° Tilt - Only 10° optic beam

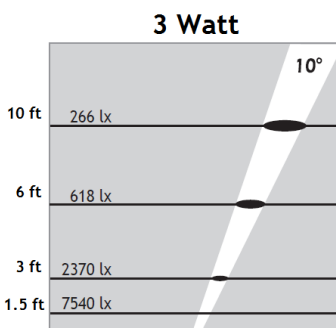
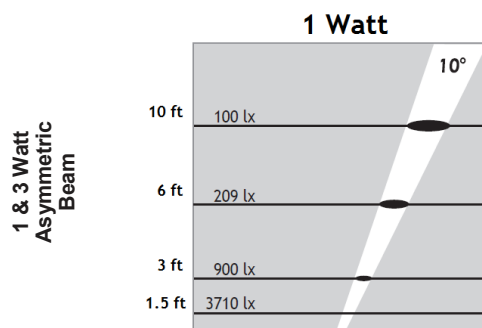
Power is remote mount

3.75" Diameter

7° Fixed Tilt



Watts	Round (Specify)	Square (Specify)	Lumens
1W	160220	160230	70
3W	160260	160270	150



Ordering Example : Patnos 1 - 160270 - 3W - 33K - 7 - 10 - C - DC

Code LED Watts LED Color Tilt Beam Lens Volts

Patnos - 1 _____ _____ _____ _____ _____ _____

PROJECT: _____

DATE: _____

QUANTITY: _____

TYPE: _____

NOTE: _____

Specialized Lighting Solutions reserves the right to change specifications without prior notice, please contact factory for latest information.

Specialized Lighting Solutions, LLC
7144 NE Progress Ct
Hillsboro, OR 97124

Tel: 503-530-8908
Fax: 503-531-0711

www.slsnw.com
10/05/20

