



IP68 : Suitable for Underwater Locations
IK10 : Impact Resistant (Vandal Resistant)

Atlantis 5 - Surface Uplight LED

5.5" round - Underwater Marine Grade Stainless Steel 316

A range of high quality Stainless Steel under water surface mounted floodlight Luminaires with a selection of different optics.

This surface mounted Luminaire manufactured from Marine Grade Stainless 316 and is designed for use in ponds, rock pools and water features. This luminaire is not rated for natatoriums, swimming pools or water parks.

Not only is the housing made of the highest quality stainless steel but incorporated in the product design is a unique product feature that uses a water proof potting compound that totally seals the back of the luminaire and stops water ingress. This Luminaire is adjustable and has a tamper resistant locking feature.

Installer Friendly.

This product is be attached to the surface by securing the luminaire using the counter sink holes provided around the base of the luminaire.

A 16 foot low voltage water proof power cable is provided from the back of the luminaire that leads to the remote mounted driver provided by SLS.

Remote mounted box provided by contractor.

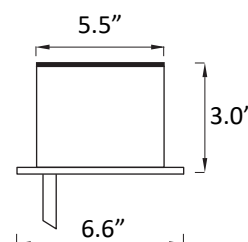
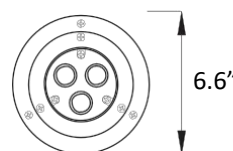
This product is available with a near water or outdoor rating. Contact factory or SLS website for more information

Technical Data

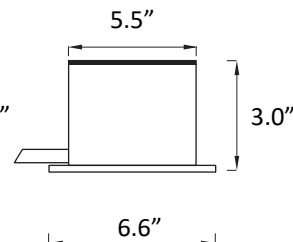
Fixture	Marine Grade 316 Stainless Steel
Bracket	Marine Grade 316 Stainless Steel
Hardware	Marine Grade 316 Stainless Steel
Lens	Tempered Glass
Driver	120-277V 50-60Hz - remote mount
Low Voltage (optional)	120VAC to 24VDC or 48VDC (depending on wattage) remote mount
LED Watts	6W, 9W, 18W, 27W
LED (white)	3300K, 4500K, 6000K
LED (static color)	Red, Green, Amber or Blue
CRI	> 85
Cable	16 foot Water Proof Cable
Approvals	ETL



Polished Finish



Bottom Cable
Entry



Side Cable
Entry



PROJECT: _____

DATE: _____

QUANTITY: _____

TYPE: _____

NOTE: _____

Specialized Lighting Solutions reserves the right to change specifications without prior notice, please contact factory for latest information.

Specialized Lighting Solutions, LLC
7144 NE Progress Ct
Hillsboro, OR 97124

Tel: 503-530-8908
Fax: 503-531-0711

www.slsnw.com
09/11/18



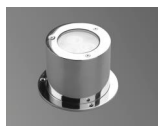


Atlantis 5 - Surface Uplight LED

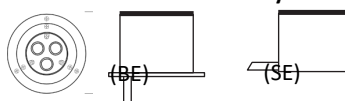
5.5" round - Underwater
Marine Grade Stainless Steel 316

5.5" Diameter

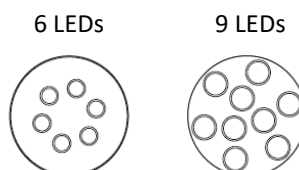
0° Tilt



Cable Entry

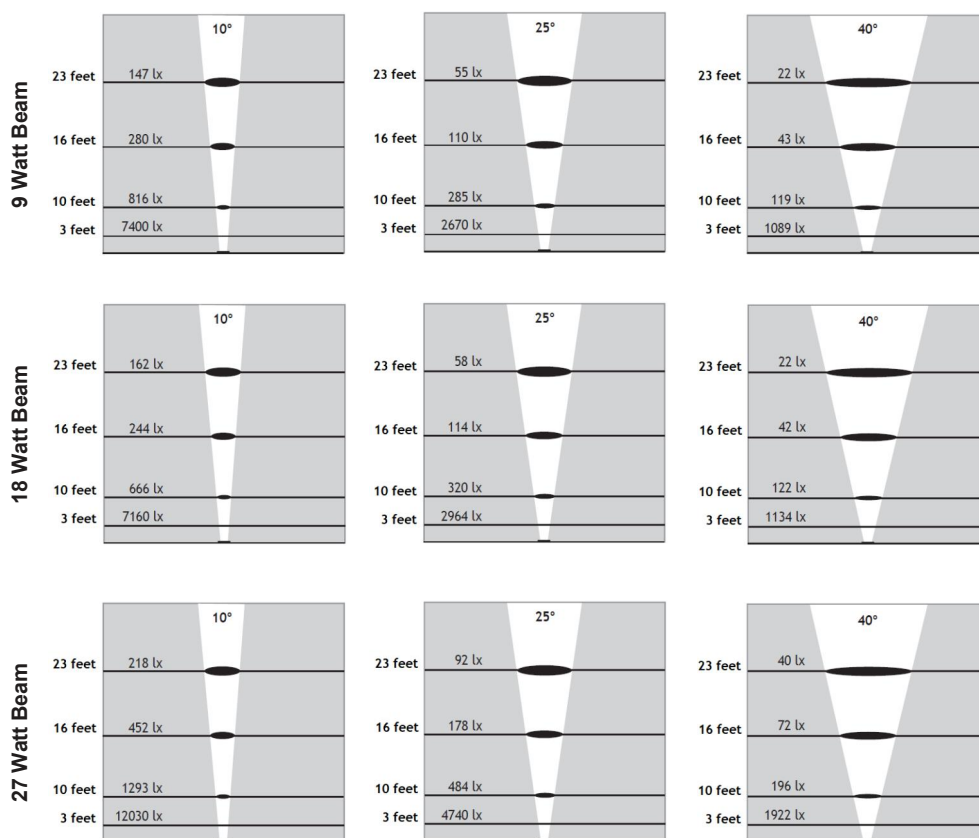


Wattage	Model (Specify)	LEDs	Lumens
6W	405380	6	420
9W	405390	9	630
18W	421840	6	900
27W	421850	9	1350



Options (Specify)

	LED Color
(33K)	3300K
(45K)	4500K
(60K)	6000K
(BLU)	Blue
(RED)	Red
(AMB)	Amber
(GRN)	Green



(BE) Cable Entry
(SE) Bottom
Side

(10) Beam Spread
(25) 10°
(40) 25°
40°

(C) Lens
(F) Clear
Frosted

(UNV) Volts
(DC) 120/277V
24V OR 48V DC

Ordering Example : Atlantis 5 - 405390 - 9W - 33K - BE - 10 - C - UNV

Code	LED Watts	LED Color	Entry	Beam	Lens	Volts
Atlantis 5 -						

PROJECT: _____

DATE: _____

QUANTITY: _____

TYPE: _____

NOTE: _____

Specialized Lighting Solutions reserves the right to change specifications without prior notice, please contact factory for latest information.

Specialized Lighting Solutions, LLC
7144 NE Progress Ct
Hillsboro, OR 97124

Tel: 503-530-8908
Fax: 503-531-0711

www.slsnw.com
09/11/18

