



IP68 : Suitable for Underwater Locations  
IK10 : Impact Resistant (Vandal Resistant)

# Atlantis 1 - Surface Floodlight LED

## 3.3" round - Underwater Marine Grade Stainless Steel 316

A range of high quality Stainless Steel underwater surface mounted floodlight Luminaires with a selection of different optics .

This surface mounted Luminaire manufactured from Marine Grade Stainless 316 and is designed for use in ponds, rock pools and water features. This luminaire is not rated for natatoriums, swimming pools or water parks. The Atlantis has a Stainless Steel mounting plate and remote mounted driver.

Not only is the housing made of the highest quality stainless steel but incorporated in the product design is a unique product feature that uses a water proof potting compound that totally seals the back of the luminaire and stops water ingress.

This Luminaire is adjustable and has a tamper resistant locking feature.

Installer Friendly.

This product can be attached to walls, concrete, pavers and wood decks, etc.

Installation is done by securing the luminaire to the surface using the counter sink holes provided around the base bracket of the luminaire.

A 16 foot low voltage water proof power cable is provided from the back of the luminaire that leads to the provided remote mounted driver.

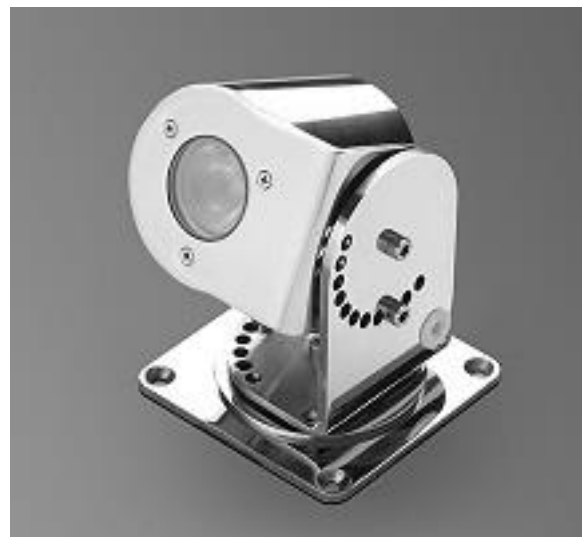
**Remote mounted driver box to be provided by contractor.**

This product is also available with an near water rating.

Contact factory for more information

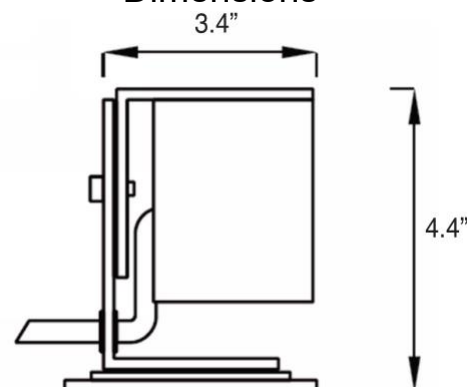
## Technical Data

<b>Fixture</b>	Marine Grade 316 Stainless Steel
<b>Bracket</b>	Marine Grade 316 Stainless Steel
<b>Hardware</b>	Marine Grade 316 Stainless Steel
<b>Lens</b>	Tempered Glass
<b>Driver</b>	120-277V 50-60Hz - remote mount
<b>Optional Low Voltage</b>	120VAC to 12VDC low voltage transformer - remote mount
<b>LED Watts</b>	1W, 3W
<b>LED (white)</b>	3300K, 4500K, 6000K
<b>LED (static color)</b>	Red, Green, Amber or Blue
<b>CRI</b>	> 85
<b>Cable</b>	16 foot Water Proof Cable
<b>Approvals</b>	ETL

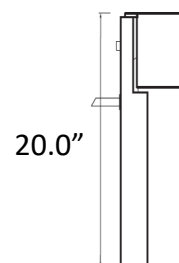


Polished Finish

### Dimensions



### Ground Spike



PROJECT: \_\_\_\_\_

DATE: \_\_\_\_\_

QUANTITY: \_\_\_\_\_

TYPE: \_\_\_\_\_

NOTE: \_\_\_\_\_

Specialized Lighting Solutions reserves the right to change specifications without prior notice, please contact factory for latest information.

Specialized Lighting Solutions, LLC  
7144 NE Progress Ct  
Hillsboro, OR 97124

Tel: 503-530-8908  
Fax: 503-531-0711

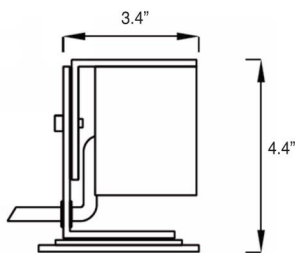
www.slsnw.com  
09/15/18



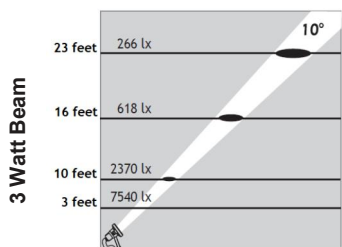
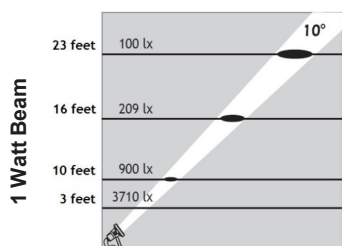
# Atlantis 1 - Floodlight LED

3.3" round - Underwater  
Marine Grade Stainless Steel 316

**3.3" Diameter  
Variable° Tilt**



Wattage	Round (Specify)	Lumens
1W	405420	70
3W	405240	150



**Options  
(Specify)**

	LED Color
(33K)	3300K
(45K)	4500K
(60K)	6000K
(BLU)	Blue
(RED)	Red
(AMB)	Amber
(GRN)	Green

	Beam Spread
(10)	10°
(25)	25°
(40)	40°

	Lens
(C)	Clear
(F)	Frosted

	Volts
(UNV)	120/277V
(DC)	12V DC

	Other
(GS)	Ground Spike

Ordering Example : Atlantis 1 - 405240 - 3W - 33K - 10 - C - UNV

Code	LED Watts	LED Color	Beam	Lens	Volts	Other
Atlantis 1						

PROJECT: \_\_\_\_\_

DATE: \_\_\_\_\_

QUANTITY: \_\_\_\_\_

TYPE: \_\_\_\_\_

NOTE: \_\_\_\_\_