



IP67 : Suitable for Near Water Locations
IK10 : Impact Resistant (Vandal Resistant)

Atlantis 1 - Surface Flood LED

3.4" round - Near Water
Marine Grade Stainless Steel 316

A range of high quality Stainless Steel near water surface mounted floodlight luminaires with a selection of different optics.

This surface mounted Luminaire manufactured from Marine Grade Stainless 316 and is designed for use in areas of high corrosion as well as the possibility of seasonal flooding, near water falls, flood plains, docks, or applications in marine environments.

Not only is the housing made of the highest quality stainless steel but incorporated in the product design is a unique product feature that uses a water proof potting compound that totally seals the back of the luminaire and stops water ingress. This Luminaire is adjustable and has a tamper resistant locking feature.

Installer Friendly.

This product is be attached to the surface by securing the luminaire using the counter sink holes provided around the base of the luminaire.

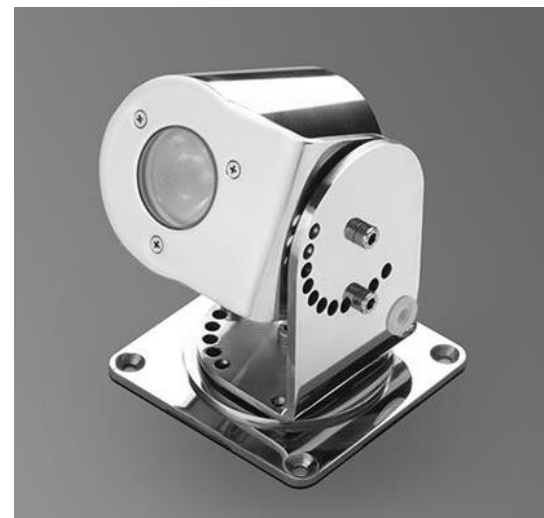
A 16 foot low voltage water proof power cable is provided from the back of the luminaire that leads to the remote mounted driver or remote 24Vdc low voltage transformer provided by SLS.

Remote mounted box provided by contractor.

This product is also available with a underwater rating. Contact factory or SLS website for more information.

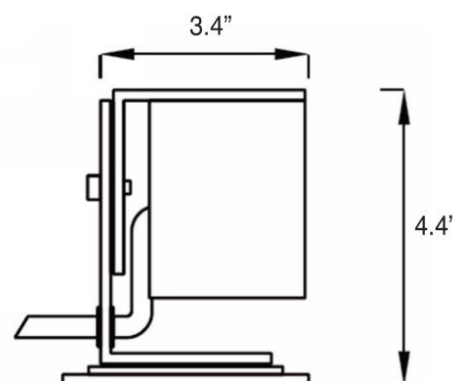
Technical Data

Fixture	Marine Grade 316 Stainless Steel
Bracket	Marine Grade 316 Stainless Steel
Hardware	Marine Grade 316 Stainless Steel
Lens	Tempered Glass
Optics	10°, 25°, 40°
Driver	120-277V 50-60Hz - remote mount
Optional Low Voltage	120VAC to 24VDC low voltage transformer - remote mount
LED Watts	1W, 3W
LED (white)	3300K, 4500K, 6000K
LED (static color)	Red, Green, Amber or Blue
Lumens	70 lm, 150 lm
CRI	> 85
Cable	16 foot Water Proof Cable
Approvals	ETL

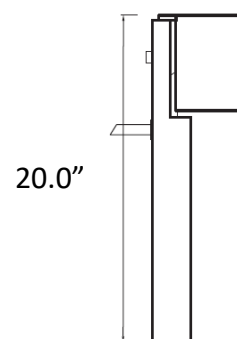


Polished Finish

Dimensions



Ground Spike



PROJECT: _____

DATE: _____

QUANTITY: _____

TYPE: _____

NOTE: _____



Atlantis 1 - Surface Flood LED

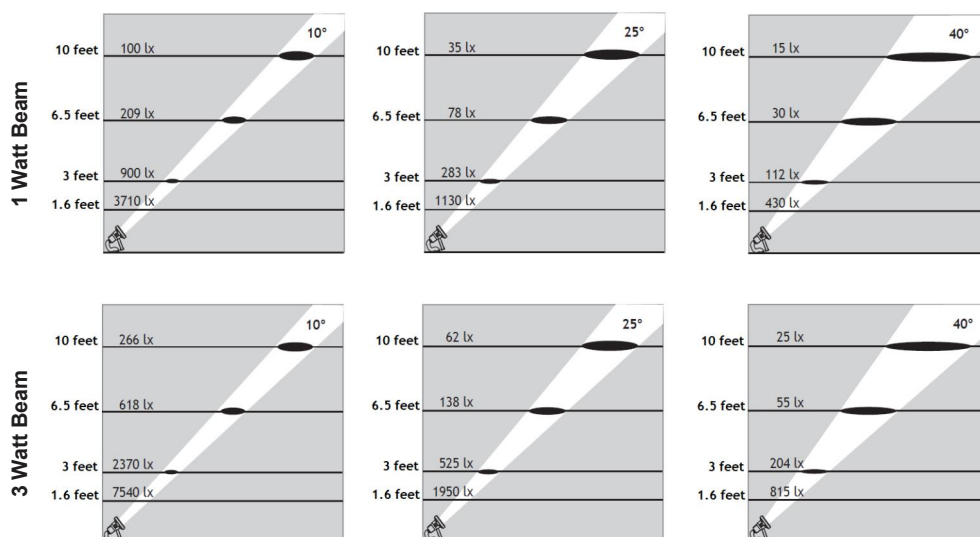
3.4" round - Near Water
Marine Grade Stainless Steel 316

3.4" Diameter

Adjustable Tilt



Wattage	Model (Specify)	Lumens
1W	412280	70
3W	421250	150



Options (Specify)

	LED Color
(33K)	3300K
(45K)	4500K
(60K)	6000K
(BLU)	Blue
(RED)	Red
(AMB)	Amber
(GRN)	Green

	Beam Spread
(10)	10°
(25)	25°
(40)	40°

	Lens
(C)	Clear
(F)	Frosted

	Volts
(UNV)	120/277V
(DC)	24V DC

	Other
(GS)	Ground Spike

Ordering Example : Atlantis 1 - 412280 - 1W - 33K - 10 - C - DC

Code	LED Watts	LED Color	Beam	Lens	Volts	Other
Atlantis 1 -						

PROJECT: _____

DATE: _____

QUANTITY: _____

TYPE: _____

NOTE: _____