



Specialized Lighting Solutions, Inc.

Clipsal DCDALM360

DALIcontrol™

DCDALMS360

Digital Motion
Detector 360°

CLIPSAL®

by Schneider Electric



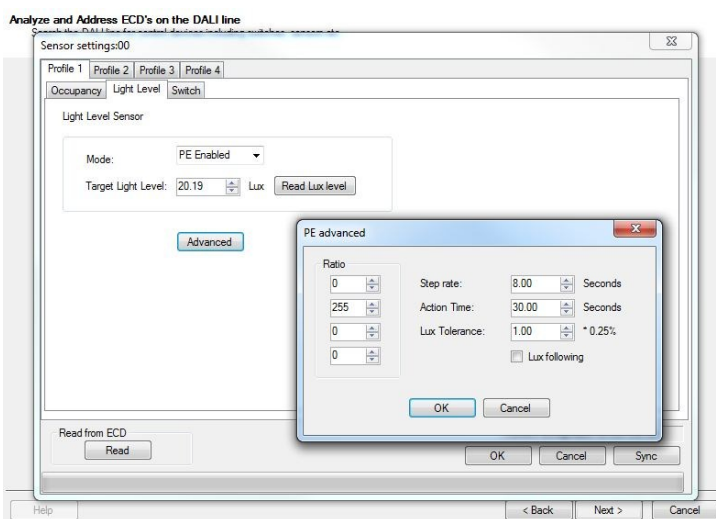
Introduction

The Digital Motion Detector combines light level sensing and PIR detection in a single unit for the lighting control system. The digital detector is a key element for occupancy control and daylight harvesting.

The digital detector uses a direct 2-wire connection to the DALI bus and draws power from the DALI bus (8mA at 50% duty cycle).

Advanced features of the detector include:

- Adjustable 360° PIR detector and light level (Lux) sensitivity
- Multi master operation and control over the DALI bus
- Light level tracking has high IR and UV rejection
- Supports linked control of PIR or Lux sensing for the same targets or different targets (e.g. Whole room (PIR) and window luminaires (Lux) control
- Full collision detection and restart ensures that commands are sent
- Configurable on- and off- actions
- Up to 4 switchable poles, for example: normal hours, after hours, generator and security
- Supports user-created custom sequences
- Fully compatible with switch and control system overrides
- Allows easy addressing with torch selection
- Protected against accidental mains connection
- Supports power failure and restart
- Use SPST momentary contact switch for override with MAX/OFF/DIM UP/DIM DOWN command
- Remote Lux level read and set-point from networked computer (see below)



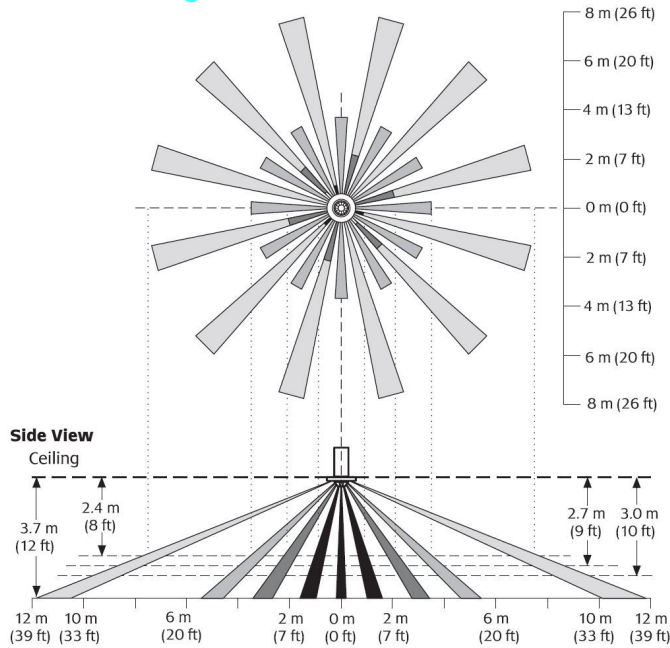
Part Number	Description
DCDALMS360	Digital Motion Detector, 360° PIR and Photocell



Specialized Lighting Solutions, Inc.

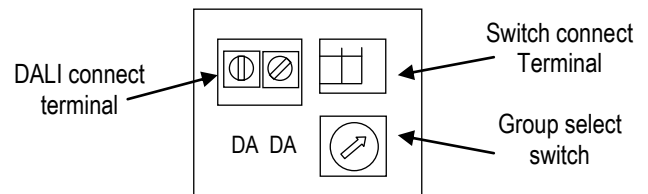
Clipsal DCDALM360

PIR Coverage

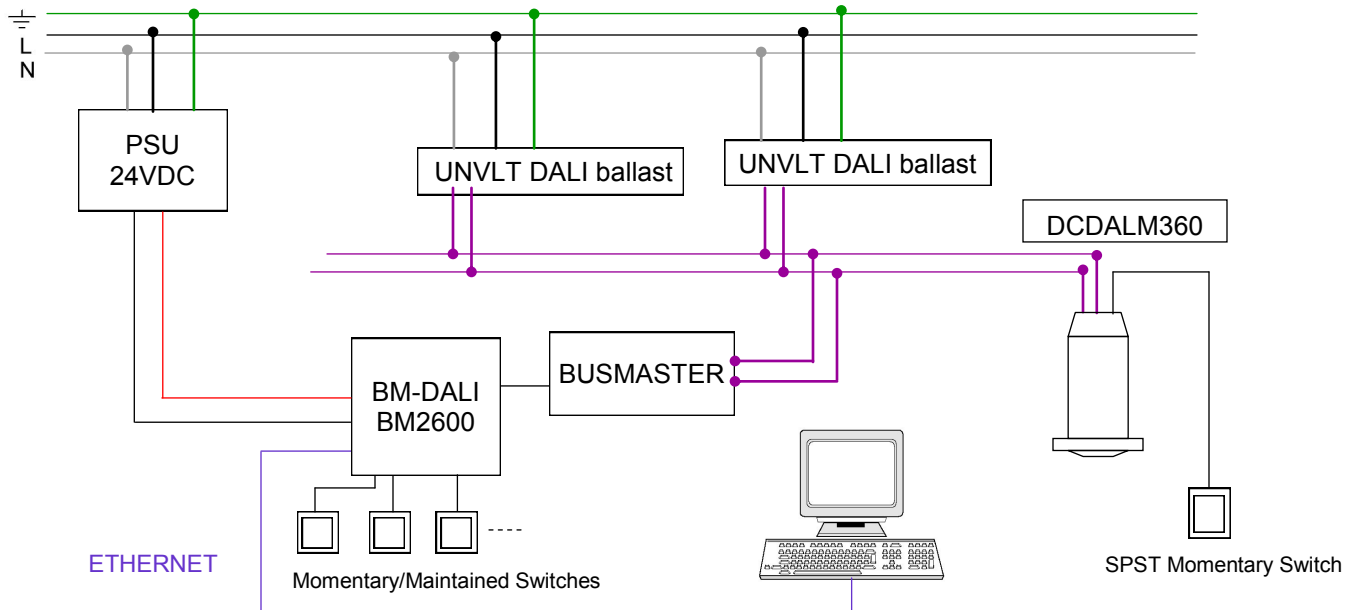


Connections and Group Settings

SW	GROUP	SW	GROUP
0	Broadcast	8	Group 7
1	Group 0	9	Group 8
2	Group 1	A	Group 9
3	Group 2	B	Group 10
4	Group 3	C	Group 11
5	Group 4	D	Group 12
6	Group 5	E	Group 13
7	Group 6	F	Group 14



Wiring



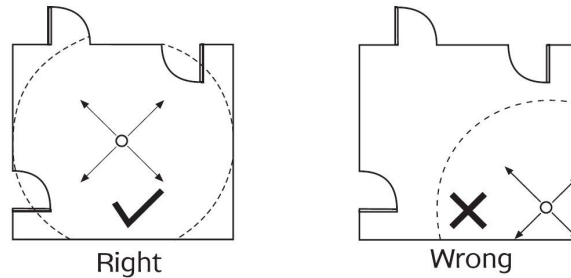


Specialized Lighting Solutions, Inc.

Clipsal DCDALM360

Installation

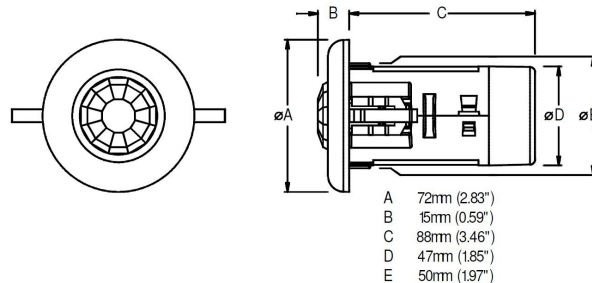
The DCDALM360 Series is for indoor use only and is designed to recess mount into the ceiling with the best location being in the centre of the room. It has a 360-degree field of view with typical detection coverage of 15 meters when mounted 2.4 meters above the floor.



SPST momentary contact switch for override

Override occupancy sensor defaults with MAX/OFF/DIM UP/DIM DOWN commands by short/long taps of Single Pole Single Throw Momentary Contact switch. If photocell is enabled, a new temporary level is stored when using the override switch. Once the occupancy sensor times out or the lights turned off with override switch the photocell is reset back to its default programmed level.

Dimensions



Specifications

Catalogue No.	DCDALM360
Operating voltage	9.5-22.5V DC
Operating current	<8mA from DALI loop
PIR rated detection field	Typically 15 meters diameter at 2.4 meters
Light level inhibit threshold	Continuous from 1 Lux to full sunlight
Maximum mounting height	3.7 meters
Minimum ceiling thickness	10mm
Maximum DCDALM360 units per DALI line	20
Maximum cable length between switch and DCDALM360 unit	8m at 300pF
Dimensions – overall	72mm diameter (W) x 103mm (L)